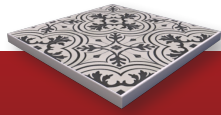
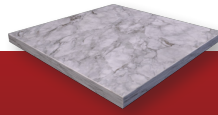


TempZone™ Shower Floor & Bench Mats

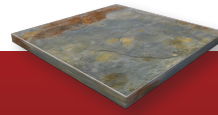
Enhance your everyday shower experience with WarmlyYours Shower Floor and Bench Mats. Bask in warm, flowing water while being enveloped by radiant heat emanating from your shower itself – the perfect formula for your shower oasis. Safe for use in wet locations, this system is ideal for today’s spa bathroom. Now, you can enjoy your bathroom floor heating experience right in your walk-in shower. These heating mats are available in several sizes and as either Shower Floor Mats or Shower Bench Mats. Shower Floor Mats come with a pre-cut hole to accommodate a shower drain and Shower Bench Mats are designed work with tiled shower benches.



Tile



Marble



Stone

✓ Safe for use in wet locations

Installs under:

Product Information

Shower/Bench Mat	Heating wire attached to an open cell type fiberglass mesh
Heating Element Color	Blue
Heating Element Insulation	Fluoropolymer
Heating Cable Outer Insulation	Fluoropolymer
Heating Output	15 watts per sq. ft.
Certifications	UL listed for wet locations like shower floors and benches
Warranty	25-year No Nonsense™ Warranty

Example Projects

	Bench Mat	Shower Mat	Shower Mat
Heated Area	16" x 32"	32" x 60"	48" x 48"
Product Cost	\$101.00 USD \$168.33 CAD	\$226.00 USD \$271.00 CAD	\$256.00 USD \$307.00 CAD
Hourly Cost*	1¢/hr USD 1¢/hr CAD		

* Based on national average of 12¢ per kWh (USA) and 14¢ per kWh (Canada)

Dimensions

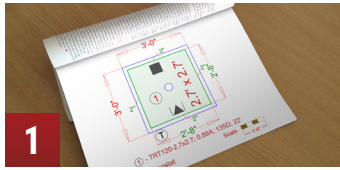
Heating Element Thickness	Variable, nominal 1/8"
Drain Hole Diameter	5"
Cold Lead Information	<ul style="list-style-type: none"> Length: 22' 17 AWG for mats of 9 amps or less ½" Conduit 2 Cold Leads Max ¾" Conduit - 3 Cold Leads Install per local code requirements
Factory Splice Max Size	.4", 13/32", 10.3mm

Electrical

- ✓ TempZone Shower Mats have no polarity.
- ✓ WarmlyYours controls are equipped with ground fault circuit interrupter (G.F.C.I.) protection.

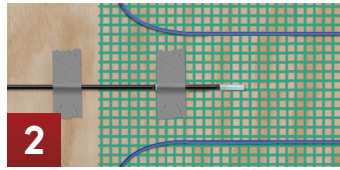
Voltage	Available in 120V
Cold Lead Construction	Style number AWM2095, 2 core wires, screened with ground
Cold Lead Wire Colors	120V: Yellow & black with black outer sheath

4 Simple Steps to Install



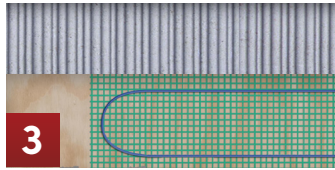
1

Layout TempZone™ Shower Mats according to your custom SmartPlan™



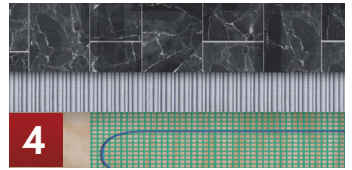
2

Secure the Included Floor Sensor



3

Apply Thinset or SLC ($\frac{3}{8}$ " thick minimum)



4

Install Flooring

Installation Information

- Heating element should be embedded within a minimum $\frac{3}{8}$ " thick layer of modified thinset or self-leveling underlayment.
- Heating element should be installed within 1" to 1.5" from the top of the flooring surface.
- Multiple Shower Mats can be wired to a control, as long as they total less than 15 amps (the limit of the controller).
- Multiple Shower Mats are never wired to each other in series (parallel wiring required). The non-heating leads from each Shower Mat need to hook up to the controller and be wired in parallel.
- Do not install under permanent fixtures.
- Entire heating section and splices need to be embedded in thinset or self-leveling underlayment to prevent overheating and premature failure.
- Do not shorten the warming mat. Do NOT cut the heating wire. Only the non-heating cold leads can be shortened.
- Do not run a power lead or sensor wire across a warming mat.

- Do not fold or position the warming system so that the mesh overlaps itself or other warming mats (this could lead to dangerous overheating).
- Do not connect the warming mat to the power supply for testing before it is embedded (this could lead to dangerous overheating). Testing is only done with a digital ohm meter.
- 120 sq. ft. of heating can be installed on a single 120 V circuit.
- TempZone Shower Mats should be installed with a floor sensor. All WarmlyYours nSpiration Series thermostats come with a floor sensor.

How to Order

1

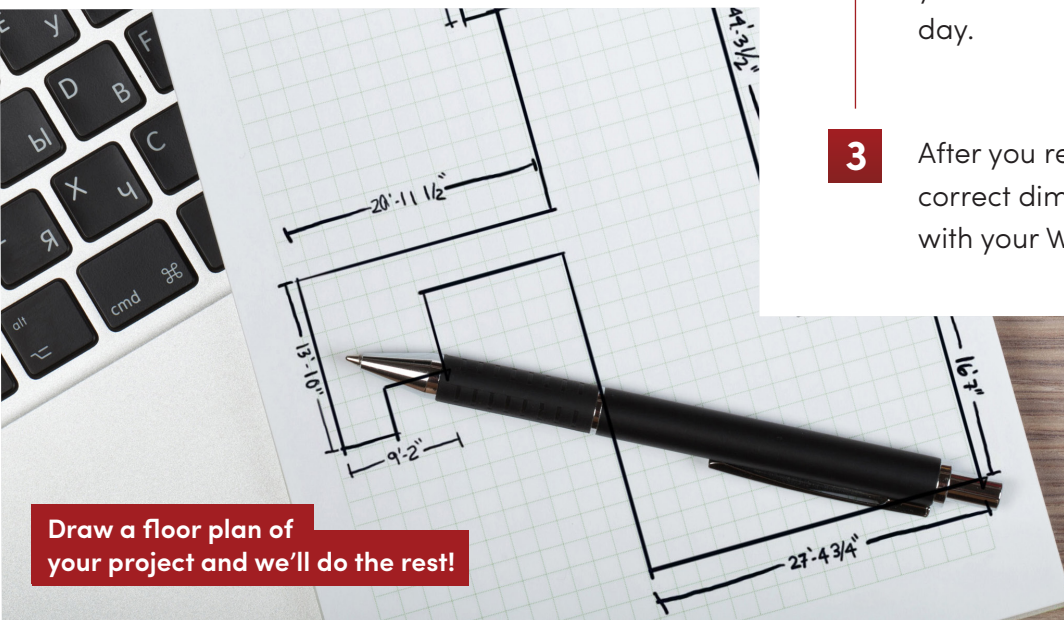
Simply draw a floor plan sketch of your project (including dimensions).

2

Send it to sales@warmlyyours.com. Then WarmlyYours's skilled engineers will create a free SmartPlan™ custom installation plan based on your drawing, typically in as little as 1 business day.

3

After you receive your SmartPlan™, just verify the correct dimensions before placing your order with your WarmlyYours account manager.



Draw a floor plan of your project and we'll do the rest!