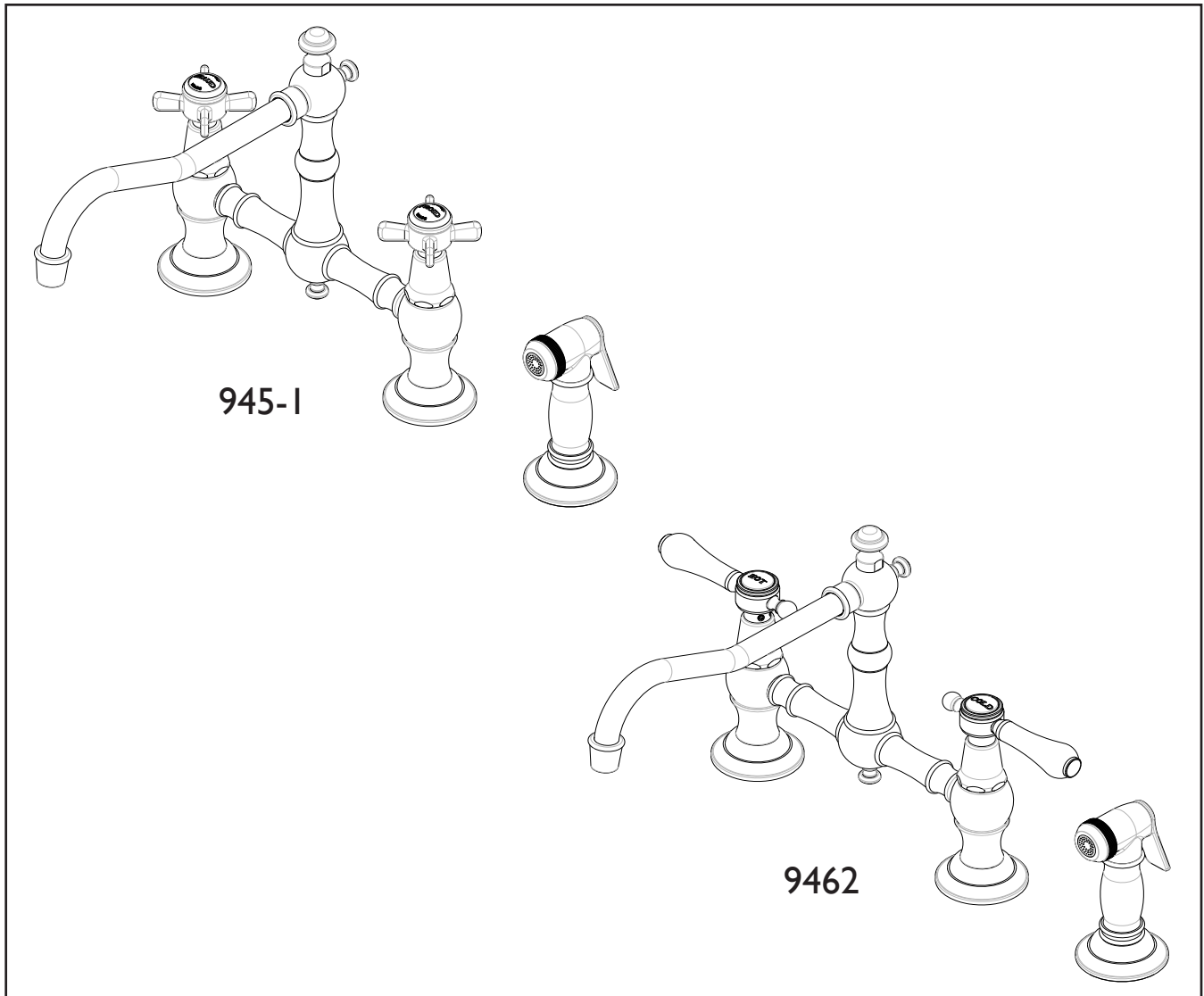


**INSTALLATION INSTRUCTIONS  
KITCHEN BRIDGE FAUCET  
WITH SIDE SPRAY  
Model No's: 945-1, 9462**

**NEWPORT BRASS**  
*Flawless Beauty. From Faucet to Finish.™*



**Congratulations on the purchase  
of this Newport Brass product,  
an excellent choice, that will give you  
years of quality service and enhance  
the look and style of your home.**

## Recommended Installation by a Professional Plumbing Contractor

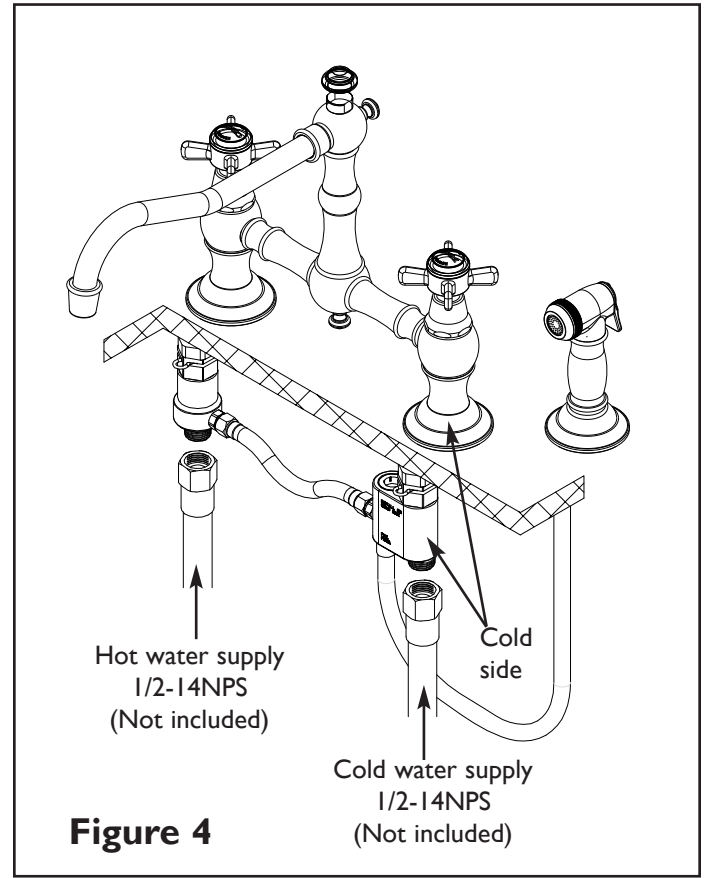
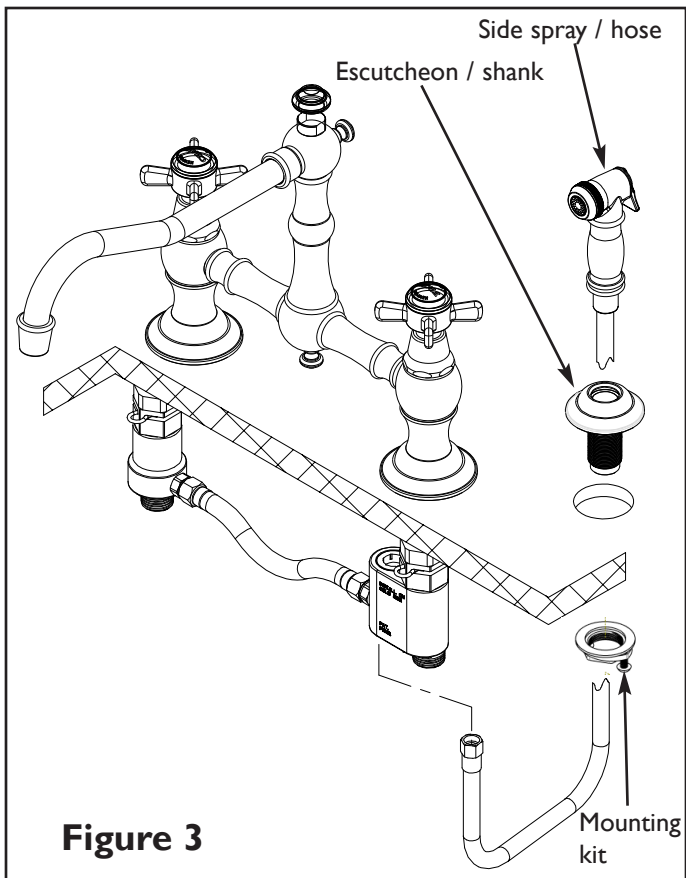
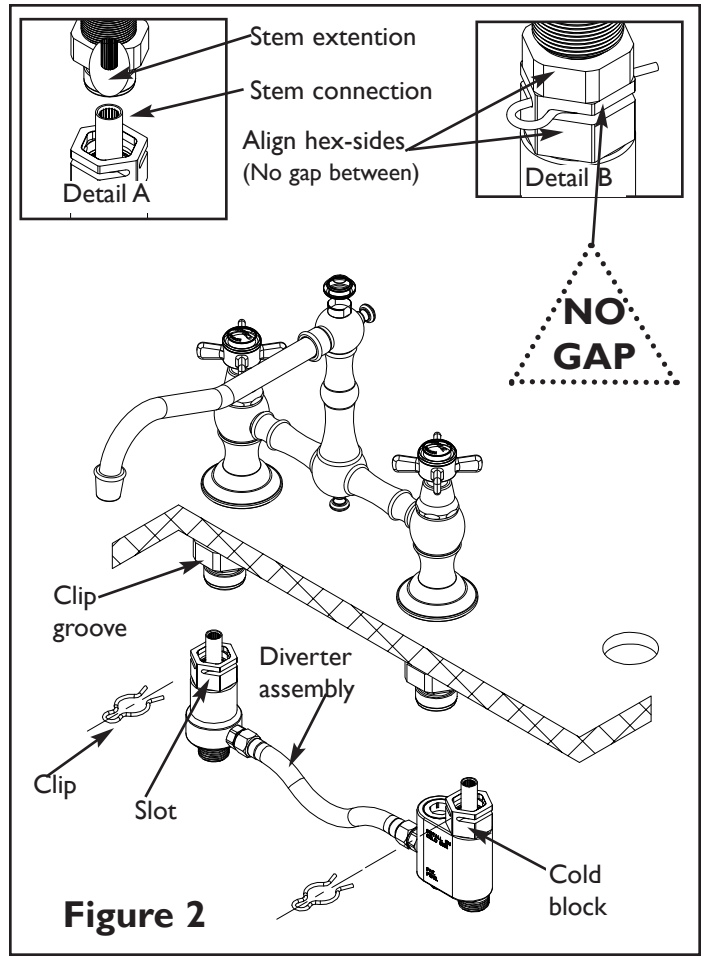
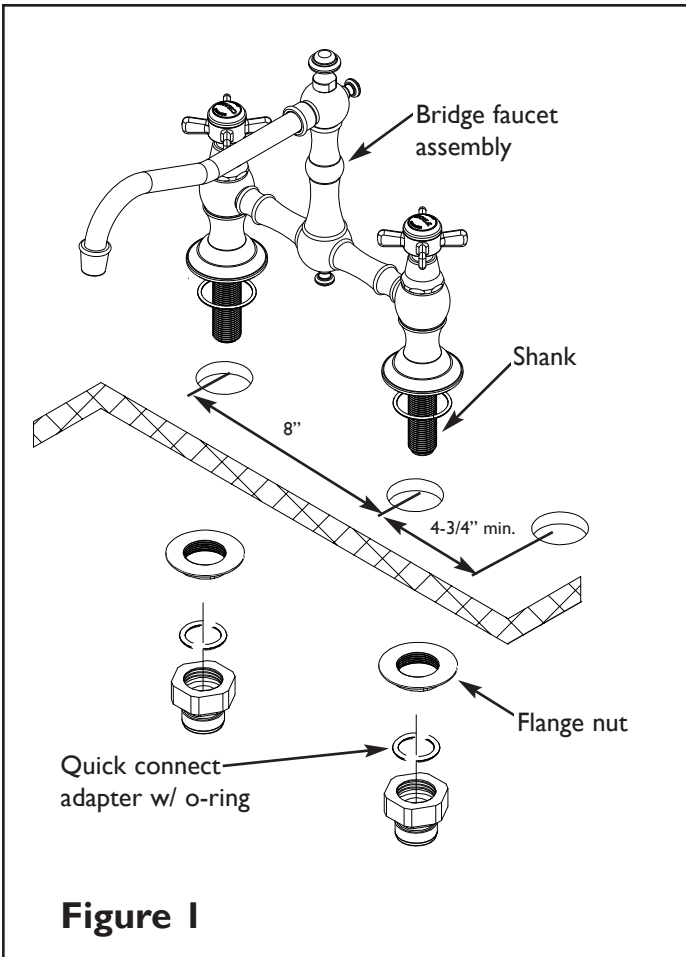
**Note:** The use of petroleum base plumbers putty on our products will nullify the warranty. We recommend the use of clear silicone sealing materials. Use Plumbers tape or equivalent to seal all threaded joints. If mounting faucet to stainless steel rim, an under-mount support, (e.g. wood, appropriate size x 1/2" thick), should be utilized.

Recommended deck hole  $\text{Ø}1.25$ . Drill holes in mounting surface, center spacing for bridge faucet to be 8" and the side spray hole to be a minimum of 4-3/4" away from the nearest mounting hole of faucet.

1. Place bridge faucet body through holes on mounting surface and secure into place with flange nuts. See **Fig. 1**.
2. Using a 13/16" Drive Socket and socket extension as needed, **torque the Quick connect adapter with o-ring inserted to 6-12 LB-FT**, onto the base of each shank. See **Fig. 1**.
3. Attach the diverter assembly to quick connect adapters - one side at a time (cold block to the cold side of faucet) as follows: Reference **Fig. 2**
  - a. Engage stem connector on to broached stem extension, located inside shank. See Detail A.
  - b. Rotate to align exterior hex of upper and lower adapters and mate together so there is **NO GAP** between the two. See Detail B.
  - c. Check the alignment of the clip groove of upper adapter and the side slots of lower adapter. Secure position by pushing clips through slot and into groove. See **Fig. 2**.
4. Place the side spray escutcheon with shank through mounting surface and secure into place with mounting kit. See **Fig. 3**.
5. Drop side spray hose through escutcheon and thread onto diverter assembly. See **Fig. 3**.
6. Attach hot and cold water supply hoses (1/2-14NPS, not included) to appropriate valve. See **Fig. 4**.
7. Adjust handle alignment as required by, removing set screws on handle base. Lift handle from stem, rotate to proper alignment and lower back onto stem. Secure into place with setscrews.
8. Remove aerator from spout, turn on water supply, and flush valves until water is clear. Check for leaks and make any final adjustments required. Re-attach aerator to the spout.

### **Important:**

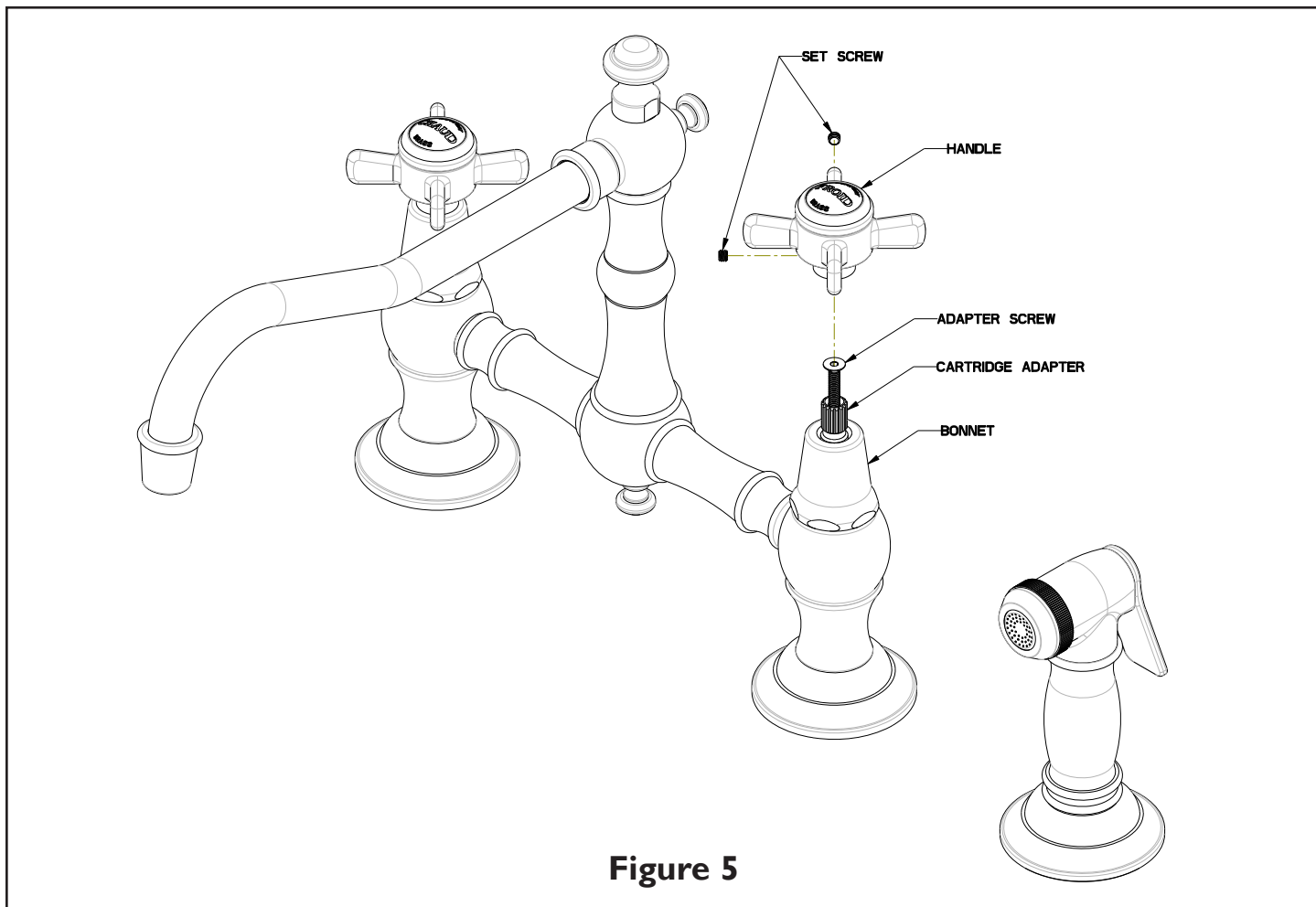
1. If the cold block of the diverter assembly is installed on the hot side of the faucet, the faucet will have no flow.
2. Faucet can operate without side spray by replacing the side spray connection to cold block with 1/4-18 NPMS or 1/4-18 NPT thread cap.



## **Adjust Handle Alignment:**

1. In **Figure 5**, ensure cartridges in full closed position and check HANDLE alignment. If the HANDLE is not correctly aligned, temporarily remove the HANDLE, loosen up (but do not completely remove) the ADAPTER SCREW and rotate CARTRIDGE ADAPTER one tooth clockwise (18 degrees), reassemble the HANDLE and recheck alignment. Repeat until the HANDLE is aligned.
2. Remove the HANDLE and tighten the ADAPTER SCREW to firmly secure the CARTRIDGE ADAPTER to cartridge. Reattach the HANDLE to the CARTRIDGE ADAPTER and secure the HANDLE in place with set screw(s).

**Note:** When reattaching the HANDLE, assure a small gap between HANDLE and BONNET to prevent from metal-to-metal contact.



**Figure 5**